



School District of Philadelphia
Office of Environmental Management Services
440 North Broad St.
Philadelphia, PA 19030

Originally Requested by: Durelle Holmes

Date Inspected:
9/8/16

Inspector Name: Brian Joseph
Company: KEM Partners

Mold Design Data Collection (DDC)

(List each work area location separately) rev. 8/8/13

Date Issued to OEMS:
9/9/16

Photographs Attached: Yes
Sketch(s) Attached: No

Name of Building: Cook Wissahickon ES

Address: 201 E. Salignac St. ULCS # 6410

Work Area Location(s): (1) Kindergarten Room 1; (2) Kindergarten Room 2; (3) Kindergarten Room 3;

Total Number of Work Locations: 3 Total Number of Action Items: 30

Anticipated Project Duration: 15 Man-days

Work Order #: _____

Work Area Location (1): Kindergarten Room 1 Type of Ventilation: unit ventilator/windows

Equipment Needed: HEPA Vacuum: Air Filtration: Critical Barriers: Ladders: Detergent Solution:
Encapsulant: Dehumidifiers: N/A Fans: N/A

Notes: Deactivate unit ventilator and install critical barrier on all door ways

Action Item	Affected Material(s)	Total Quantity	Remediation*	Source of Moisture	Comments/Condition (i.e. dry/wet)
1	Mold growth was observed on the wooden built-in cabinetry.	2 EA	CLN	Introduction of outside air into a conditioned space during construction activity.	HEPA Vacuum and Clean
2	Mold growth was observed on the built-in wooden coat cubby.	1 EA			
3	Mold growth was observed on the plastic chairs and tables.	30 EA			
4	Mold growth was observed on the wooden doors and metal frames.	4 EA			
5	Mold growth was observed on the unit ventilator. The interior and exterior of the cabinet should be thoroughly cleaned.	1 EA			
6	Mold growth was observed on the metal storage cabinet.	1 EA			
7	All materials and contents should be thoroughly checked and cleaned or discarded as needed.	ALL			
8	Wet fiberglass pipe insulation was observed in the soffit above the unit ventilator.	4 LF	DIS	Leak above ceiling	Discard
9	No signs of mold growth were observed on the ceiling; however, small spalling sections of the concrete were noted.	N/A	RMV	N/A	The spalling sections of concrete ceiling should be scraped.
10	No sign of mold growth were observed on the floor; however, it should be cleaned following completion of the above.	N/A	CLN	N/A	HEPA Vacuum and Clean

Size of Work Area: SM MED LG

*Remediation Codes: DRY (dry); CLN (clean); ENP (encapsulate); DIS (discard); RMV (remove); RPL (replace)

Signature: Brian Joseph

Date: 9/9/16

Work Area Location (2): Kindergarten Room 2 Type of Ventilation: unit ventilator/windows

Equipment Needed: HEPA Vacuum: Air Filtration: Critical Barriers: Ladders: Detergent Solution:

Encapsulant: Dehumidifiers: N/A Fans: N/A

Notes: Deactivate unit ventilator and install critical barrier on all door ways

Action Item	Affected Material(s)	Total Quantity	Remediation*	Source of Moisture	Comments/Condition (i.e. dry/wet)
11	Mold growth was observed on the wooden built-in cabinetry.	3 EA	CLN	Introduction of outside air into a conditioned space during construction activity.	HEPA Vacuum and Clean
12	Mold growth was observed on the built-in wooden coat cubby.	1 EA			
13	Mold growth was observed on the plastic chairs and tables.	30 EA			
14	Mold growth was observed on the wooden doors and metal frames.	4 EA			
15	Mold growth was observed inside the sink cabinet and a leak was observed.	1 EA			
16	Mold growth was observed on the metal storage cabinet.	1 EA			
17	Mold growth was observed on the teacher's desk.	1 EA			
18	CLOSET – mold growth was observed on the radiator cover in the closet	1 EA			
19	CLOSET - mold growth was observed on the plastic chairs.	6 EA			
20	All materials and contents should be thoroughly checked and cleaned or discarded as needed.	ALL			
21	Mold growth was observed on a ceiling tile.	1 EA	DIS	Leak above ceiling	Discard
22	No signs of mold growth were observed on the unit ventilator, however, the interior and exterior of the cabinet should be thoroughly cleaned.	1 EA	CLN	N/A	HEPA Vacuum and Clean
23	No sign of mold growth were observed on the floor; however, it should be cleaned following completion of the above.	N/A	CLN	N/A	HEPA Vacuum and Clean

Size of Work Area: SM MED LG
(remove); RPL (replace)

*Remediation Codes: DRY (dry); CLN (clean); ENP (encapsulate); DIS (discard); RMV

Work Area Location (3): Kindergarten Room 3 Type of Ventilation: unit ventilator/windows

Equipment Needed: HEPA Vacuum: Air Filtration: Critical Barriers: Ladders: Detergent Solution:

Encapsulant: Dehumidifiers: N/A Fans: N/A

Notes: Deactivate unit ventilator and install critical barrier on all door ways

Action Item	Affected Material(s)	Total Quantity	Remediation*	Source of Moisture	Comments/Condition (i.e. dry/wet)
24	Mold growth was observed on the wooden built-in cabinetry.	3 EA	CLN	Introduction of outside air into a conditioned space during construction activity.	HEPA Vacuum and Clean
25	Mold growth was observed on the built-in wooden coat cubby.	1 EA			
26	Mold growth was observed on the plastic chairs and tables.	30 EA			
27	Mold growth was observed on the wooden doors and metal frames.	4 EA			
28	All materials and contents should be thoroughly checked and cleaned or discarded as needed.	ALL			
29	No signs of mold growth were observed on the unit ventilator, however, the interior and exterior of the cabinet should be thoroughly cleaned.	1 EA	CLN	N/A	HEPA Vacuum and Clean
30	No sign of mold growth were observed on the floor; however, it should be cleaned following completion of the above.	N/A	CLN	N/A	HEPA Vacuum and Clean

Size of Work Area: SM MED LG
(remove); RPL (replace)

*Remediation Codes: DRY (dry); CLN (clean); ENP (encapsulate); DIS (discard); RMV (remove); RPL (replace)



Photo 1 – Kindergarten Room 1



Photo 2 – Kindergarten Room 1

Small sections of spalling concrete ceiling were observed on the ceiling.



Photo 3 – Kindergarten Room 1
Small sections of spalling concrete ceiling were observed on the ceiling.



Photo 4 – Kindergarten Room 1
A missing ceiling tile and condensate was dripping from the ceiling. Wet fiberglass pipe insulation was observed above the suspended ceiling.



Photo 5 – Kindergarten Room 1
Mold growth was observed on the unit ventilator.



Photo 6 – Kindergarten Room 1
Mold growth was observed on some of the plastic chairs.

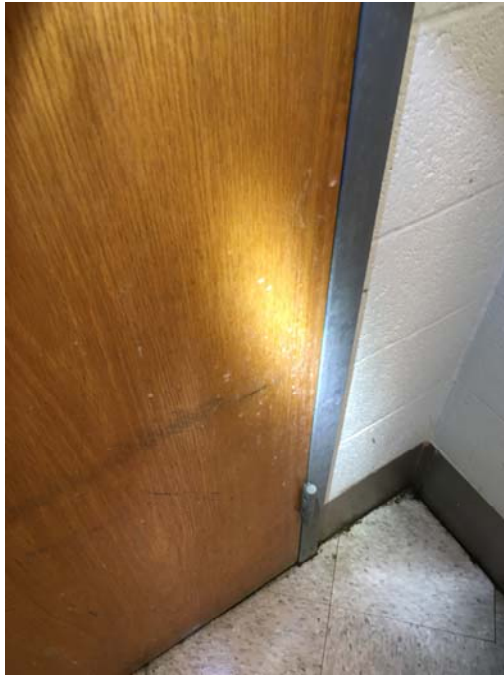


Photo 7 – Kindergarten Room 1
Mold growth was observed on the wooden door and metal frame.



Photo 8 – Kindergarten Room 1
Mold growth was observed on the wooden door and metal frame.

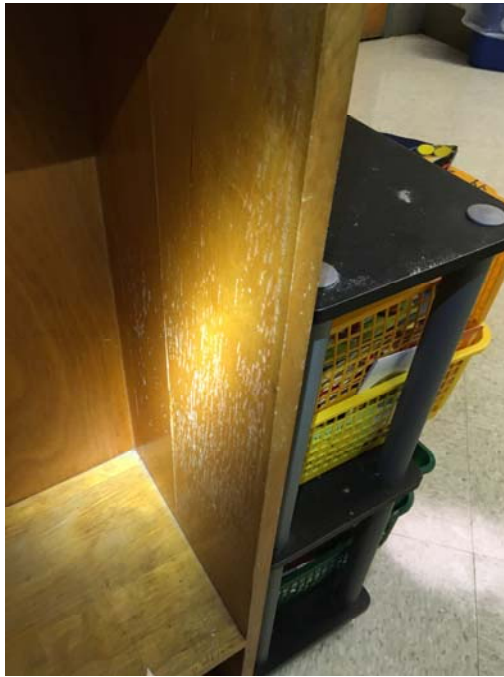


Photo 9 – Kindergarten Room 1
Mold growth was observed on the wooden built-in cabinetry and coat cubby.

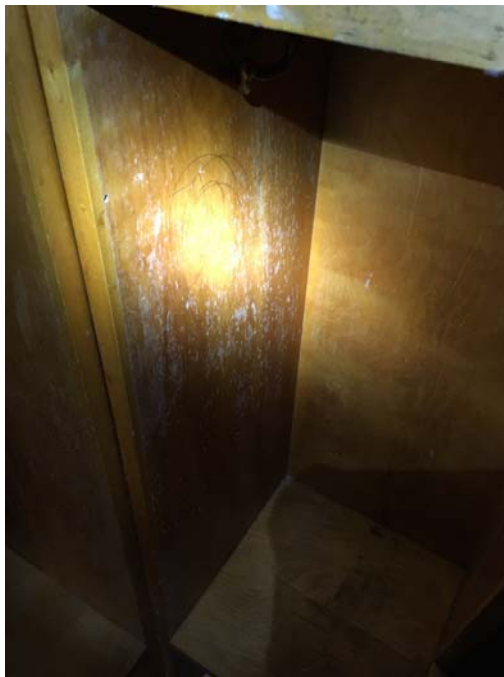


Photo 10 – Kindergarten Room 1
Mold growth was observed on the wooden built-in cabinetry and coat cubby.



Photo 11– Kindergarten Room 1
Mold growth was observed on the wooden built-in cabinetry and coat cubby.



Photo 12 – Kindergarten Room 1
Mold growth was observed on the metal storage cabinet.



Photo 13 – Kindergarten Room 2
Missing ceiling tiles were observed.

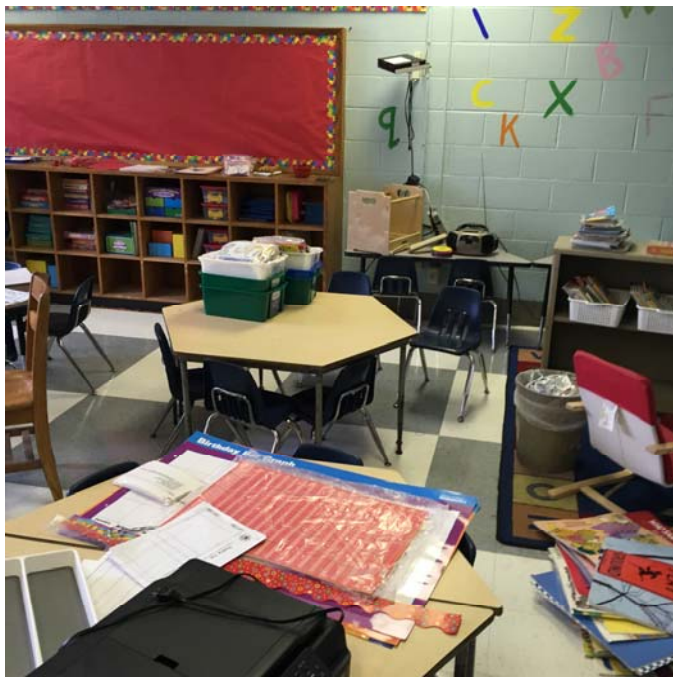


Photo 14 – Kindergarten Room 2



Photo 15 – Kindergarten Room 2



Photo 16 – Kindergarten Room 2

Mold growth was observed on the built-in wooden cabinetry and coat cubby.



Photo 17 – Kindergarten Room 2
Mold growth was observed on the built-in wooden cabinetry and coat cubby.



Photo 18 – Kindergarten Room 2
Mold growth was observed on the built-in wooden cabinetry and coat cubby.



Photo 19 – Kindergarten Room 2
Mold growth was observed on the built-in wooden cabinetry and coat cubby.



Photo 20 – Kindergarten Room 2
Mold growth was observed on the built-in wooden cabinetry and coat cubby.



Photo 21 – Kindergarten Room 2
Mold growth was observed on the built-in wooden cabinetry and coat cubby.

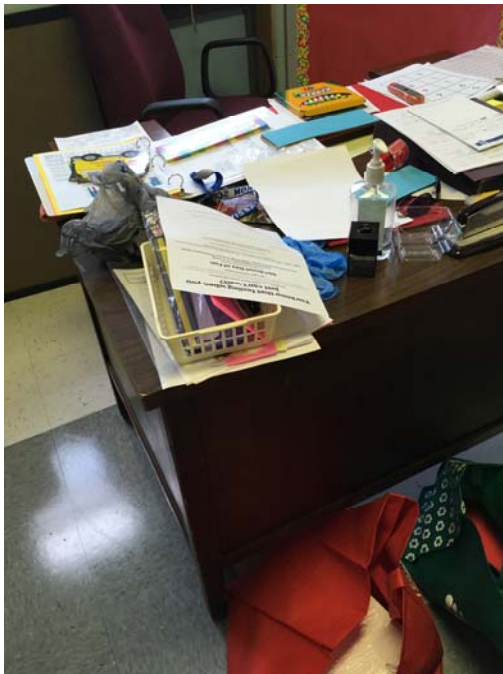


Photo 22 – Kindergarten Room 2
Mold growth was observed on the teacher's desk.



Photo 23 – Kindergarten Room 2
Mold growth was observed on a ceiling tile.



Photo 24 – Kindergarten Room 2
Mold growth was observed on cabinetry.



Photo 25 – Kindergarten Room 2
Mold growth was observed on the sink cabinet.

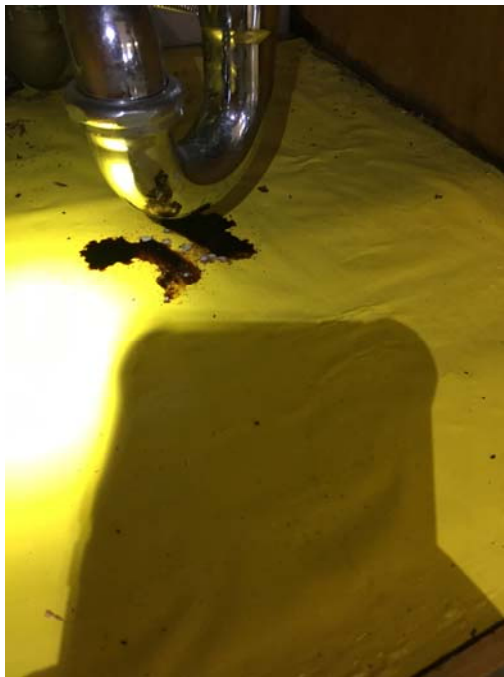


Photo 26 – Kindergarten Room 2
A leak was observed under the sink.



Photo 27 – Kindergarten Room 2 Closet

Mold growth was observed on the radiator cover and chilled water was passing through the heating convector.



Photo 28 – Kindergarten Room 2 Closet

Mold growth was observed on the plastic chairs.



Photo 29 – Kindergarten Room 3



Photo 30 – Kindergarten Room 3

Mold growth was observed on the wooden built-in cabinetry and coat cubby.

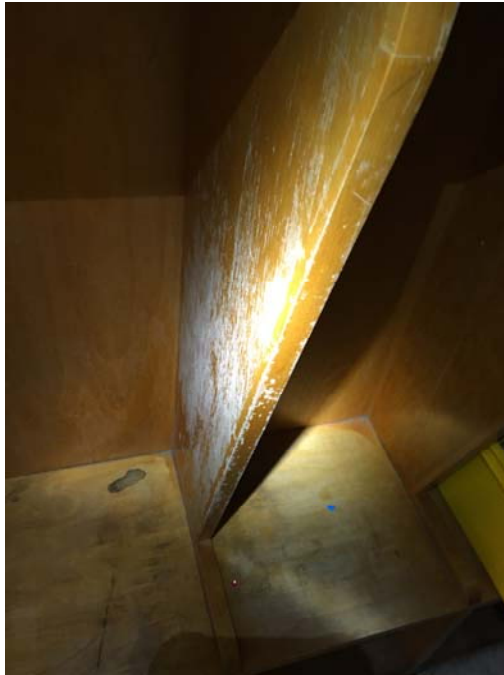


Photo 31 – Kindergarten Room 3
Mold growth was observed on the wooden built-in cabinetry and coat cubby.



Photo 32 – Kindergarten Room 3
Mold growth was observed on the plastic chairs.



Photo 33 – Kindergarten Room 3
Mold growth was observed on the plastic chairs.



Photo 34 – Kindergarten Room 3
The return air tray was not seated properly and no air filters were observed inside this unit.